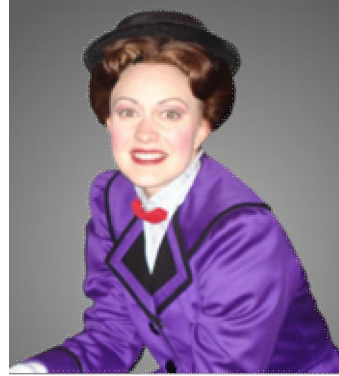


Catherine Walker made her Broadway debut with the original cast of Disney & Cameron Mackintosh's hit musical *Mary Poppins*, and became Broadway's second Mary; flying over the heads and into the hearts of Broadway audiences for over 100 performances. She left that production to join the original cast of the highly acclaimed Broadway revival of *Ragtime*. Catherine continues to cross the country representing Walt Disney Productions in national concert appearances. She has appeared on *The Today Show*, *The View*, the 2007 *Tony Awards Show*, and the *Macy's Thanksgiving Day Parade*. She has sung for the annual Broadway on Broadway Concert in Times Square, Broadway Sings for Toys and the Fred Ebb Awards. Recently, Catherine was seen at The Maltz Jupiter Theater as Hope in *Anything Goes*, and in the title role of the musical, *Gypsy*, in the premiere production of the new Northshore Music Theatre, and as Mary Poppins in the televised 2010 Philadelphia IKEA Thanksgiving Day Parade.

Previous to her Broadway debut, Catherine performed a concert of Marc Blitzstein music at **The Kennedy Center** for their celebration of *A New America: The 1940's and The Arts*. She has sung with **George Hearn** in *A Tribute to **Stephen Sondheim*** with the Pittsburgh Symphony Orchestra, and performed with Stephen Schwartz in *The Music of Stephen Schwartz* for the Andrew Carnegie Society.



Her regional credits include *Camelot* at the **Paper Mill Playhouse**, starring Brent Barrett, and *Jekyll & Hyde*,

directed by Robert Cuccioli and starring **Kevin Gray**, at Houston's **Theatre Under the Stars**.

Other regional credits include such roles as Christine in Yeston's *Phantom*, Julie Jordan in *Carousel*; Magnolia in *Show Boat*; Emma in *Jekyll & Hyde*; Fiona in *Brigadoon* and Elaine in *Arsenic and Old Lace*.

Catherine has also originated roles, both in and out of New York City. She is a native of Lancaster, PA, and earned her BFA in Vocal Performance from Carnegie Mellon University. Catherine is a proud member of the Actor's Equity Association.